

# 2-Wheel Flat Honing and Fine Grinding 平面珩磨和研磨

**Increased quantities – More performance – Series production – High productivity User-friendliness – Precision and Safety**

提高产能-提高精度-系列化批量生产-高效生产-友好的用户操控界面-精度和安全性



## 2-Wheel Flat Honing and Fine Grinding

### **Inspiration.**

*Nature is our model: Inspiration and standard for our endeavours towards innovation and perfection.*



WWW.VEMA.CN

- Flow cooling system of the working wheels  
砂轮冷却系统
- Quick loading and unloading thanks to the ingenious "Sandwich-System"  
巧妙的"Sandwich系统"可快速上下料
- Part or full automation easily interlinked to precision deburring systems or the like  
部分或全部自动化, 易于与去毛刺系统等相连
- Process controlled machining  
加工过程控制
- Integrated computer-assisted measurement  
计算机辅助综合测量
- High availability  
高可靠性
- Incidental analysis by machine control  
机械控制附带分析
- Remote maintenance /  
telediagnostic / online-support  
远程维护/远程诊断/在线支持
- High precision non-contact in-process  
size measuring system  
高精度非接触式在线尺寸测量系统

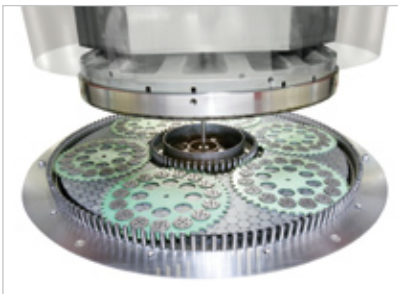
Increased quantities and series production with high stock removal require more performance. Our DLM 705 – 1205 range of machine is dedicated to high productivity,

user-friendliness, economic efficiency, precision and safety.

提高产能和去除大余量的连续生产要求更高的性能。我们的DLM 705-1205系列机器致力于高效精密生产，友好的用户操作界面，经济高效，精确安全。

Flat Honing with diamond or CBN-wheels or alternatively fine grinding with conventional SiC or corundum wheels – opt for a future in super finishing with a newly developed machine from the STAHLI Group. Performance, sturdiness and quiet running for high stock removal stand for high precision and low piece cost. The technological advantages are well in evidence:使用金刚石或CBN砂轮进行平面珩磨，或者使用传统的碳化硅或刚玉砂轮进行研磨-选择使用Stahli集团新开发的机器开启超精加工的未来。高精度、低成本、性能稳定、运行安静。技术优势显而易见：

- Mineral cast structure guarantees top thermal and mechanical endurance  
矿物铸造结构保证了最高的热机械耐久性
- Energy-efficient节能
- Short changeover time转换时间短



## Technical data 技术参数

	DLM 705	DLM 1005	DLM 1205
Working wheel diameter, external 工作砂轮直径	500-720 mm (710 mm 标配)	800-1220 mm (1020mm 标配)	1020-1225 mm
Number of carriers 工件夹具数量	4-7		
Height range between working wheels 砂轮之间的高度范围	<390 mm		
Working load continuously variable 工作负荷连续可变	0-2000 (4000) daN	0-3500 (6000) daN	0-4000 (8000) daN
PC-operating control PC操作控制	programmable control 程序控制		
Switch off precision 开关精度	0.1 μm		
Cooling of working wheel 转轮冷却	yes		
Speed range, upper and lower wheel, continuously 上下轮盘速度范围			
Flat honing and fine grinding 平面精磨	0-250, 400, 600 min <sup>-1</sup>	0-210, 320 min <sup>-1</sup>	0-210, 300 min <sup>-1</sup>
Center drive 中心驱动	0-125, 220 min <sup>-1</sup>	0-150 min <sup>-1</sup>	0-100 min <sup>-1</sup>
Direction of rotation for all drives 所有驱动器的旋转方向	programmable control 程序控制		
Power ratings 额定功率			
Total driving power 总驱动功率	3x400-480 Volt 50/60 Hz	3x400-480 Volt 50/60 Hz	3x400-480 Volt 50/60 Hz
Dimension 尺寸 W x D x H	ca. 3300 x	ca. 4000 x	ca. 4000 x
B x T x H	1970 x 2600 mm	2700 x 2900 mm	2700 x 2900 mm
Weights 重量	ca. 7800 kg	ca. 12500 kg	ca. 13000 kg

## Options 选配项

Semi or full automation robot loading, interlink 与半自动化或全自动化装载机器人互连	yes
Interlink to precision deburring systems 与去毛刺系统互连	yes



*We are one of the leading companies worldwide in the manufacture of flat honing, lapping and polishing machines. At our customers we are known just as much by our standard products as by custom-made and need-oriented special products. This*

*special know-how results from decades of experience from daily new assignments in contract work and the support of our expert and committed workforce. We are happy to pass on our know-how to our customers within the framework of contract*

*work, tests and complex or experimental project studies. Put to the test our reliability and innovative dynamism. Further information may be obtained from the addresses listed or from our homepage.*



**VEMA Technology Co.,Ltd**

Tel.: 025-85590128

E-mail:sales@vema.cn

**www.vema.cn**

